

# School...

a word that gently pulls us back  
to life's most treasured chapter—  
when every morning felt like a festival  
and every day held a promise.  
A quiet spark lived within us,  
restless, curious, free—  
yearning to slip past boxed-in walls,  
to wander, to wonder, to laugh,  
and discover the world  
in our own untamed, joyful ways.



*Designing the Future of Pedagogy*



Featured on Society **INTERIORS** Cover Page Oct 2014 Issue



Malad (w) , Mumbai





**6 hours** a day, **265 days** a year—

students, teachers, and staff inhabit school buildings.

At **SPIRIT**, we envision learning environments that are as restless and curious as the minds within them.

**Breaking the Box** isn't just about removing walls; it's about unlocking the freedom to wander, wonder, and discover. We partner with elite institutions to design spaces that invite movement and celebrate the untamed, joyful ways children truly learn."

## 12+ Lakh sq. ft. of Educational Spaces Designed & Delivered

Spanning multiple cities like Mumbai . Pune . Vadodara . Kochi . Bengaluru . Bhilwara . Udaipur



## WHY US

Most architects design schools by arranging classrooms.

We design schools by understanding how children learn.

We begin with learning behavior — how students focus, move, collaborate, and explore — and then shape the spaces around it.

This creates environments that naturally support attention, engagement, and better teaching. Instead of rigid classrooms, we create **learning ecosystems**: quiet focus zones, collaborative hubs, activity areas, reading corners, and flexible open spaces — all working together as one integrated learning environment.

We do not use templates.

Every school is designed around its curriculum, age groups, teaching philosophy, and growth vision.

Our buildings are not just functional. They actively improve how education is delivered.

**The result:** more engaged students, more effective teachers, and a future-ready school that stands apart.

That is what it means to **Break the Box.**



## FRONT OFFICE (RECEPTION)

The Gateway  
Experience:  
Modernizing  
Administrative  
Entry

Environmental graphics  
and character art  
impart a child-friendly  
atmosphere while  
maintaining a  
high-end corporate  
aesthetic for visitors.



Borivali , Mumbai

## FRONT OFFICE (RECEPTION)

A sophisticated lobby using the school's signature colors in ceiling elements to create a high-impact brand journey from the moment of entry.



**VIBGYOR**<sup>®</sup>  
HIGH  
Hinjewadi, Pune

## EARLY YEARS

Are designed as **Discovery Nests** that are a safe, nurturing environment where learning happens naturally.



Borivali , Mumbai



## EARLY YEARS

From rigid classrooms to  
dynamic learning environments



Borivali , Mumbai



## EARLY YEARS

designed to create a  
safe, stimulating,  
and welcoming  
environment



Borivali , Mumbai



# CLASSROOM

Where thoughtful  
design supports  
better learning

Furniture  
allows  
quick  
reconfiguration



Malad (w), Mumbai

## Break the Box

A classroom that breaks the box, sparking imagination and new ways of learning



# CLASSROOM

designed  
to feel joyful, calm,  
& engaging from  
the moment  
one steps in

Wall surfaces  
double  
as learning tools

V I B G Y O R™

KIDS

Yerwada, Pune



# DANCE ROOM

Designing a room  
as fluid as the  
movement within it

Designed with  
optimal acoustics,  
mirrors,  
and flooring

**VIBGYOR**<sup>®</sup>  
HIGH

Magarpatta, Pune



## PERFORMING ARTS (Music Room)

Designed  
to resonate  
with every beat  
and every note



**VIBGYOR**®  
HIGH

NIBM, Pune

# PERFORMING ARTS

Smart retractable seating transforms the area into a badminton court, maximizing dual-use space



Professional Grade AV integration

## PERFORMING ARTS

Our multi-purpose auditorium designs transform passive listening into active participation. With immersive lighting and tiered seating, we create spaces where every student has a front-row seat to inspiration.



Featured on  
Society  
**INTERIORS**  
Oct 2014 Issue



Malad (w) , Mumbai



# LIBRARY

A reading-lounge library where warmth, comfort, and quiet meet in perfect harmony.

Featured on Society **INTERIORS** Oct 2014 Issue



A section on "Digital Resource Integration" within these quiet spaces.



Malad (w) , Mumbai



# LIBRARY

The mezzanine railing features graphics of eminent figures from Indian history, ranging from Aryabhata to Hon. Prime Minister Narendra Modi.

Featured on Society **INTERIORS** Oct 2014 Issue



# LIBRARY

A contemporary library that encourages curiosity and connection

- Reading
- Informal discussion
- Quiet retreat

V I B G Y O R <sup>TM</sup>

KIDS

Yerwada, Pune





Pillars of India



आप जैसे विचार करो, वैसा ही बन जाओगे।  
अगर आप अपने को कमजोर मानते तो  
आप कमजोर बन जाओगे और  
यदि आप अपने को लकड़खर मानते तो  
लकड़खर बन जाओगे।

As you will think, as you will become.  
If you consider yourself weak  
then you will become weak and  
if you consider yourself strong  
then you will become strong.

Swami Vivekanand

Pillars of India





"We are Indians, firstly and lastly"

"I measure the progress of a community by the degree of progress which women have achieved"

"Cultivation of mind should be the ultimate aim of human existence"

Dr. Babasaheb Ambedkar

## LIBRARY

Pillars that tell a story - each representing an eminent Indian personality, with a snapshot of their achievements.



VIBGYOR<sup>®</sup>  
HIGH  
NIBM, Pune

Where the  
**ART ROOM**  
itself becomes a  
work of art.



**VIBGYOR**<sup>®</sup>  
HIGH  
NIBM, Pune





Featured on Society **INTERIORS** Cover Page Oct 2014 Issue



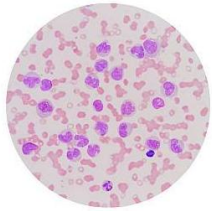
An  
**ART ROOM**  
to spark imagination

 **WITTY**  
INTERNATIONAL  
SCHOOL  
Malad (w) , Mumbai



## Biology Lab

Where safety, visibility, and durability are built into every detail.



**Theme :**  
Ceiling elements inspired by cells reinforce learning within the biology lab



Malad (w) , Mumbai

# PHYSICS LAB

A hands-on design for exploration and experimentation



**Theme :**  
Magnets integrated into the ceiling create the right 'field' for learning and concentration

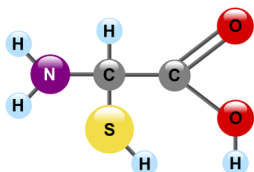


Panathur, Bengaluru



# CHEMISTRY LAB

Labs designed to meet international safety standards, including eye-wash stations and proper ventilation



**Theme :**  
A molecule-inspired web design flows seamlessly across the ceiling



Malad (w) , Mumbai

# IT LAB

Future-ready  
IT labs designed  
for comfort,  
focus, and  
performance



**Theme :**  
Circuit board  
inspired ceiling  
for the Vibes



Panathur, Bengaluru



# INDOOR SPORTS

Featured in Society **INTERIORS** Oct 2014 Issue

Ergonomic,  
color-coded seating,  
environments  
that energize  
the student body.



## Theme :

The Olympic ring  
ceiling delivers  
a bold, high-impact  
statement in the  
indoor sports



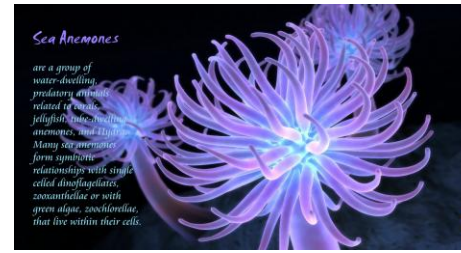
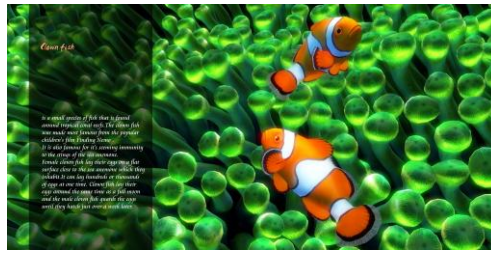
Malad (w) , Mumbai



# STAIRCASE

Making  
Every Square Foot  
Work Harder

Graphic panels  
with Detail  
Information of the  
Flower, Birds,  
Sea Animals



It is a species of bird in the family Muscicapidae. It is found in Bangladesh, Bhutan, China, India, Laos, Myanmar, Nepal, Pakistan, and Thailand. The bird lives in the brushy undergrowth in a variety of moist and tropical forest types, including mixed, broad leaved, secondary and disturbed lowland montane forests throughout the Himalayas.



# STAIRCASE

are designed for peer-to-peer learning.



*Begonia*  
*begoniaceae*

*They are native to moist subtropical and tropical climates. Some species are commonly grown indoors as ornamental houseplants in cooler climates and during summertime they are cultivated outside for their bright colorful flowers, which have sepals but no petals. The Begonias also has medicinal properties and helps in treating rheumatic arthritis, asthma, and it also acts as a liver tonic.*

Graphic with Detail Information of the Flower



# SCHOOL – FAÇADE DESIGN

A modern school building featuring a clean White & Grey exterior accented by the school's signature colors



Birds' graphic integrated into the school building represent freedom of thought and the joy of growing without limits.



Elevation

VIBGYOR<sup>®</sup>

HIGH

Hinjewadi, Pune



## SCHOOL – FAÇADE DESIGN

features a minimalist  
white facade  
enhanced by vibrant,  
multi-colored  
geometric accents  
that foster a dynamic  
learning environment.



Dodanekkundi, Bengaluru



## SCHOOL – FAÇADE DESIGN

A charming three-story preschool building ,  
featuring a friendly dinosaur mascot,  
decorative laser-cut screens, and  
an inviting artificial turf play area.



Borivali , Mumbai



**BEFORE**



**ST. PIUS X INTERNATIONAL SCHOOL**

Mulund, Mumbai

From SSC to international style -  
modern design  
with Budget-friendly solutions

**AFTER**





## BEFORE

*Problem:* Forgotten passage

*Solution:* Multipurpose Hub



**Shishu Vihar**  
SCHOOL

Chinchpokli, Mumbai



## AFTER

**BEFORE**



**Break the Box**

## INDOOR SPORTS

Vibrant geometric ceiling features and rhythmic color-coded zones break the traditional "box" to create a multi-sensory athletic space.



**VIBGYOR**<sup>®</sup>  
HIGH

Balewadi, Pune





## BEFORE

We reimagined the perimeter not  
Just as a boundary, but as a canvas  
for learning and community identity.  
Name of the school in multiple  
Indian languages  
engraved on hexagonal tiles

शिशु विहार Marathi  
শিশু বিহার Bengali  
શિશુ વિહાર Gujarati  
शिशु विहार Hindi  
ಶಿಶು ವಿಹಾರ್ Kannada  
ഷിഷുവിഹാർ Malayalam  
ਸ਼ਿਸ਼ੂ ਵਿਹਾਰ Punjabi  
شیشو ويار Sindh  
ஷிஷு விஹார் Tamil  
శిషు విహార్ Telugu  
شیشو وېرار Urdu

**Shishu Vihar**



**Shishu Vihar**  
SCHOOL

Chinchpokli, Mumbai

## AFTER



**BEFORE**

A new face for a future-focused school

**AFTER**



**ST. PIUS X INTERNATIONAL SCHOOL**

Mulund, Mumbai



## Shaping Schools : Projects Brought to Life



Project Type : Interiors  
Locations : Mumbai | Udaipur | Bhilwara  
Area Designed : **1,45,000 sq.ft**



Project Type : Interiors  
Locations : Mumbai  
Area Designed : **25,000 sq.ft**



Project Type : Interiors  
Locations : Pune  
Area Designed : **2,43,500 sq.ft**



Project Type : Architecture | Interiors  
Locations : Bengaluru | Pune  
Area Designed : **5,30,000 sq.ft**

Project Type : Interiors  
Locations : Mumbai | Pune  
Area Designed : **3,56,000 sq.ft**



Project Type : Interiors  
Locations : Pune  
Area Designed : **20,000 sq.ft**



Project Type : Interiors  
Locations : Mumbai  
Area Designed : **17,000 sq.ft**



### ST. PIUS X INTERNATIONAL SCHOOL

Project Type : Interiors + Elevation Treatment  
Locations : Mumbai  
Area Designed : **15,000 sq.ft**



Project Type : Interiors  
Locations : Mumbai  
Area Designed : **20,000 sq.ft**



### Auxilium Convent High School

Project Type : Interiors  
Locations : Mumbai  
Area Designed : **1,500 sq.ft**



## ONGOING PROJECTS

Precision-built off-site  
to ensure the  
school remains  
a quiet, clean, and  
safe environment  
for students during  
the build.



**GEMS**  
Modern Academy  
SMART CITY - KOCHI

*(Architecture & Interiors)*  
Area @ 75,000 sq.ft

# ONGOING PROJECTS

Empowering  
tomorrow's leaders  
within a castle  
built for  
modern learning



Pre school, Pune  
(Architecture & Interiors)  
Area @ 32,000 sq.ft



3D Impression



Current Site Picture  
Near Completion



# ONGOING PROJECTS

Pune  
(Architecture & Interiors)  
Area @ 1,75,000 sq.ft



**CRIMSON ANISHA  
GLOBAL SCHOOL**  
Committed to Excellence



## End-to-End School Design Support

At **SPIRIT**,

We offer comprehensive consultancy services for

- Master Planning & Campus Design
- Architectural design
- Site Infrastructure, Landscape & Sports facilities
- Interior design
- Refurbishing of Existing Schools
- Cost Estimation & Tendering



## Why Schools Choose **SPiRiT** ?

- Deep specialization in educational environments
- Design aligned with academic intent
- Experience working with operational schools
- Long-term thinking, not cosmetic design
- Theme Based designs

## LEGACY

Established Practice - Since 1992

Over three decades of experience designing highly functional spaces with clarity, longevity, and everyday comfort.



Ar. Shailesh Veera  
B. Arch (Gold medallist )  
*M.S. University (Vadodara)*

Sphere headed by



Meetali Kamath Nerurkar  
B.F.A (A.A.)  
*Sir. J.J. Institute of Applied Art*



Let's **Rethink** Your Learning Spaces !!!

[www.spirit.net.in](http://www.spirit.net.in)

[connect@spirit.net.in](mailto:connect@spirit.net.in)

**Meetali Nerurkar**

+91 9920301307